



## St Nicolas and St Mary CE Primary School

Eastern Avenue, Shoreham-by-Sea, West Sussex BN43 6PE

Tel: 01273 454470 Email: [office@stnm.org.uk](mailto:office@stnm.org.uk)

Web: [www.stnicolasmary.w-sussex.sch.uk](http://www.stnicolasmary.w-sussex.sch.uk)

Headteacher Mr A Lincoln BA Hons

Executive Headteacher Mr D Etherton B.Ed Hons. NPQH



Bishop  
Otter  
Academy  
Trust

4<sup>th</sup> September 2023

Dear Parents and carers,

### Be Courageous!

A very warm welcome back to our St Nic's family. With the term beginning tomorrow, we have put together key information that we feel will be useful to have before we open the school gates in the morning. You will find in the letter an update on the building works, information on drop off and pick up arrangements and other key items of information for yourselves and most importantly our children.

At our staff INSET day, Fr James reminded us of the story of Moses and the Burning Bush. Whilst tending sheep, Moses was *attentive* and noticed a bush that was on fire and was *curious* to discover that it was not burning up. Although afraid, Moses showed *courage* and approached the bush and consequently met with God who had great plans for him.

We also want to be *attentive*, *curious* and approach this term with **COURGAGE**. There may be many challenges and 'burning bushes' but together we want to move ahead in God's **faith, hope and love**.

### Building Update

We have moved out of The Ark so that it can be refurbished over the coming year. It is now completely surrounded by a hoarding – which we hope to decorate in due course.

Contractors have a compound on the St Nic's / Buckingham field which they access via Buckingham Close – so please do not park here and take care when crossing roads nearby.

On the Fir Tree Playground we have some new mobile classrooms for Years 1-4. We have a brand new 'Tropical Playground' and at the front of the school we have a new temporary 'Oak Tree Playground'. Three new offices/group rooms have been built within the main school building. We also have some temporary storage containers at the front of the school which are being used to store spare furniture.

Please be assured that the health and safety of all pupils, staff and visitors remains a high priority. We have been really impressed with the thoroughness of Kier's approach to health and safety. If you have any questions about this, please be in touch.

### Coming into school

Due to the building works, pupils will need to come into school as per below. Please note that signage is in place and members of staff will be on hand to direct parents and children.

The school gates will open at 8.40 (for 8.45am) and close at 8.55am. Parents and carers arriving after this time will need to sign in children at the school office. It is really important that all children arrive on time as some have a little further to go to get into their classroom.

- **Nursery** – Parents, carers and children enter via from the Cherry Tree Playground (near the main school hall).
- **Reception** – Parents and carers need to go through the wooden gate in to the Early Years area drop children off by their classrooms.



Courage 🐟 Faith 🐟 Hope 🐟 Love

- **Year 1** – Parents and carers need to walk through the Early Years area and drop off their children outside their mobile classrooms – at the foot of the ramp/steps. Parents then need to leave via the Fir Tree gates which lead onto the field and a temporary path which leads back to the front of the school.
- **Year 2** – Parents and carers need to walk across the Oak Tree Playground and follow the temporary path to the Fir Tree gates. They can then go on to the Fir Tree Playground and drop off children by the steps to their mobile classroom. Parents and carers will then need to return the way they came in.
- **Years 3 and 4** – Parents will need to drop off children outside the Main Hall. Children will then walk through the hall, pass the music room and across the Fir Tree Playground to the mobile classrooms. They will walk between the two blocks and up the staircases to their classrooms.
- **Year 5** – Children will walk through the Main Hall and go down the main corridor to their class
- **Years 6** – Children will go through the staff carpark. They must walk on the pavement.

### **Pick Up – end of the school day**

The school gates will open from 3.00pm and close at 3.20pm after school.

- **Nursery** – Parents and carers to wait by the nursery entrance
- **Reception** – Parents to wait in the early years area opposite their child’s class. (Please keep the main path free for other parents to get through)
- **Years 1** – Parents are to walk through the Early Years Area and wait outside their child’s classroom. They can then leave via the Fir Tree gates and temporary path on the school field.
- **Years 2, 3 and 4** – Parents should wait on the Oak Tree Playground (at the front of the school)
- **Years 5 and 6** – Parents can meet their children on the Cherry Tree Playground by the entrance to the Main Hall.

### **Security**

Parents and carers are reminded that they must not enter any classroom/building unless they have signed in first at the school office and are wearing a lanyard. The only exception is for special events in the Hall (when invited to do so).

### **Bags**

Please ensure children only bring a book bag and lunch box to school. Unfortunately we do not have the space for lots of rucksacks in school unless children have an afterschool sports club.

### **Reinforced Autoclaved Aerated Concrete (RAAC)**

You may have seen recent media coverage regarding Reinforced Autoclaved Aerated Concrete (RAAC) and its use in educational settings. RAAC is a lightweight form of concrete; because it is weaker than regular concrete, concerns have been raised about its long-term durability. We wanted to inform you that St Nicolas & St Mary’s Primary School is not affected by this decision as we do not have RAAC in any of our buildings and therefore they will continue to function as normal. You can read more on the DFE’s [article on the Education Hub](#).

### **Senior Leadership News**

From September 2023, our senior leadership team is as follows:

- Mr Lincoln – Headteacher
- Miss Wing – Deputy Headteacher - Monday and Tuesday (On Wednesdays to Fridays she is supporting another school)
- Dr Bishop – Deputy Headteacher and Acting SENDCO. Dr Bishop is now working 5 days per week.
- Mrs Woodman – Has joined the senior leadership team as Assistant Headteacher
- Mr Etherton – Executive Headteacher (and CEO of Bishop Otter Academy Trust)
- Mrs Cooke – School Business Manager (and CFO of Bishop Otter Academy Trust)

Do talk to anyone of us – particularly on the school gate!

### **Final Message**

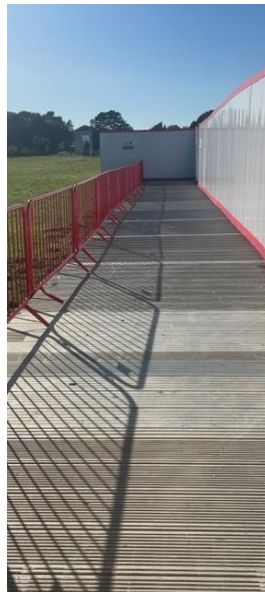
The sun is shining, staff are making preparations and we all look forward to welcoming you all back to school. It’s going to be an exciting term!

Kind regards

Mr Lincoln and the Senior Leadership Team



The Ark surrounded by scaffolding. There are signs and staff to show you where your class is!



Steps to a new classroom.

Path around the field.

'Fir Tree Playground Gates'



Follow the signs to our new toilets!

**Courage** 🐟 **Faith** 🐟 **Hope** 🐟 **Love**