

I. Dates & Events

Event	Yr	Date	Time
Y3 Victorian Day – children to come to school in costume and can wear these all day.	Y3	Monday 18 th November	9am – 12pm
Prayer Space Week	All	Tues 19 th – Thurs 21 st Nov	All day
PTA AGM and meeting	All	Wednesday 20 th November	1 – 3pm
Prayer Space Open Afternoon for Parents & Carers	Parents & Carers	Wednesday 20 th November	3.15 – 4pm
Y6 SATS & Dalesdown meeting for parents & carers	Y6	Thursday 21 st November	3.30 – 4pm
Y5 Turtle Showcase – parents/carers welcome	Y5 Tur	Friday 22 nd November	9.15am
Chartwells – Knife & Fork Workshops	Y1	Monday 25 th November	pm
PTA – Wreath Making	Adults only	Monday 25 th November	7.30 – 9.30pm
Parent/Carer Forum – Personal Social Health & Economic (PSHE) Education	Parents & Carers	Tuesday 26 th November	9 – 10am
Y6 Oyster Class Living Wax Museum – parents & carers welcome	Y6-Oys	Wednesday 27 th November	9 – 9.30am
Y6 Coral Class Living Wax Museum – parents & carers welcome	Y6-Cor	Friday 29 th November	9 – 9.30am
Non-uniform day in exchange for donations for the Christmas Fayre chocolate and bottle tombolas	All	Friday 29 th November	All day
PTA – Christmas Fayre	All	Friday 29 th November	3 – 6pm

Don't forget to check the dates for the whole term on the website!

2. **NEW DATES / AMENDMENTS TO DATES:** none added this week!**INFORMATION ABOUT UPCOMING EVENTS**

- **Prayer Space week:** please do contact the office if you are able to help on Tuesday, Wednesday or Thursday (slots listed below). Thank you. *The Prayer Space will be open for parents to visit on Wed 20th Nov from 3.20 – 4pm.*

3. **Letters sent home this week:** Click on the link to see past letters <http://www.stnicolasmary.w-sussex.sch.uk/page/?title=Letters+Sent+Home&pid=56>

- KS2 – Eucharist permission
- YR – Nativity ticket request
- Y2 – Nativity ticket request

4. **Clubs:** to check if clubs are running, see the *Extra-curricular Activities* page on the website [Extra-Curricular Activities](#)5. **Worship & Ethos:**

A new command I give to you: Love one another. As I have loved you, so must you love one another. By this everyone will know that you are my disciples, if you love one another. John 13: 34-35



Messy Church: St Giles Church Hall, Upper Shoreham Road, Saturday 23rd November, 3pm – 5pm. We will be exploring the story of Jonah and the Whale and also sharing in a family friendly Communion. We look forward to welcoming you and enjoying the worship, craft and meal together.

6. **Prayer Space Volunteers Required!** Next week, it is our Prayer Space week and we need 1-2 volunteers to help run each session (see below.) Please contact the office if you can help. Many thanks.**St Nicolas and St Mary School Parent/Carer Volunteer Timetable – Nov 2019**

- | | | | |
|--|----------------|----------------|---------|
| • Tuesday 19 th November: | 9am – 10.30am | 10.35am – 12pm | 1 – 3pm |
| • Wednesday 20 th November: | 10.35am – 12pm | 1 – 3pm | |
| • Thursday 21 st November: | 9am – 10.30am | 10.35am – 12pm | 1 – 3pm |

7. CHRISTMAS NEWS

- 🍎 **Chartwells Christmas Dinner** – Thursday 19th December: if your child is in Years 3, 4, 5 or 6 and they would like to have a Christmas dinner on this day, you need to book a meal for them online (menu on page 7) <https://westsussex.mealselector.co.uk/> The deadline to book is **Sunday 8th December**.
- 🍎 **PTA Wreath Making:** Christmas Season is upon us at St Nic's! Our wreath making night is just over a week away so please do start to collect foliage – pine, ivy, eucalyptus, hedge stems and ferns make popular wreath making greenery. We can start taking them in the Palace the week beginning 18th November. Thank you so much. *Claire Mulcare*
- 🍎 **Christmas Fayre:** If you haven't done so already, please sign up to help run your year group stall at the Christmas Fayre – it cannot run without your support. Do speak to your class rep who will be organising the rota and choose your preferred 45 minute time slot. Paper copies of the rota will be available at pick up next week. Thank you for helping us raise much needed money for our school.
- 🍎 **Christmas Hampers for Raffle:** please see flyer at the end of the bulletin for details.

8. Supporting Charities

- **Helping our Local Homeless:** this week, Sophie from Turning Tides, came to talk to the children about the work the charity does to look after our local homeless. This includes welcoming people into local Community Hubs, where they can use the washing facilities, have a hot meal and drink and also take part in different activities such as art and crafts. Turning Tides also have accommodation which they offer to those who are in need on a short term basis to get them back on track. We will be collecting items (see the box in reception) which can be used at the local hubs during the run up to Christmas and would be really grateful if you can make a donation from the list provided (see wish list on page 4). Please ensure that any donated sleeping bags or duvets are clean and have the necessary fire instructions. Sophie told us that the centre is always in need of tea and coffee due to the huge amount of cups which are served each day! Any donations will be very gratefully received.
- **Shoe Boxes for Romania:** many thanks to all the families who have already brought in a shoe box for the Link to Hope Romania appeal. We have extended the deadline to next week so you still have time to make one! Please bring it in by the end of next week so we can take it to the depot. Thank you!

9. Premises, Health & Safety

- **Staff car park:** Could we please remind you that parents/carers must not use the staff car park unless they have been given prior permission to do so. A parent drove into the car park on Friday afternoon at pick-up at high speed – this was incredibly dangerous as children were coming out of school and staff were leaving the site. **PLEASE PLEASE PLEASE** drive carefully and considerately, we do not want an accident to happen.

10. **Recycling:** from Monday 18th November, we will be able to collect extra recycling to earn money for the school and our local community. We are now linked with Lancing Recycling and Terracycle and can collect some waste that would normally go into landfill. These items include crisp packets, biscuit wrappers, toothbrushes, toothpaste tubes, milk bottle lids and cat and dog food pouches. Please look out for the labelled bins on the Astroturf on the Cherry Tree playground and read the leaflet in this bulletin about what we can and can't take. If you would like to help us sort through the recycling on a Friday morning, please contact Sarah Ringshaw or Gigi Backshall-Wilkinson from the PTA, who are coordinating this. If you have any questions about what can or cannot be recycled, please catch us on the playground or use the Facebook group "St Nics recycling". Thank you!

11. Applying for a school place for September 2020: parents & carers applying for a place need to:

- Complete the [County Admissions Form](https://www.westsussex.gov.uk/admissions) (online) by Wednesday 15th January 2020 (compulsory).
- Complete and return the [Supplementary Information Form](#) to school by 4pm on Wednesday 15th January 2020.
- If you are a regular worshipper, please ask your Minister / Priest to complete the [Church Support Form](#), and ask him/her to return the form to the school by 4pm on Wednesday 15th January 2020.

12. Requests & Reminders

- **The Sun Newspaper's Book for Schools:** don't forget to collect the tokens from *The Sun newspaper* so we get some books for the school! Thanks, the English Team.
- **Green Slips:** Please note that when parents/carers complete a green slip (about end of day arrangements), they must ensure that other parents/carers are aware of and would consent to such arrangements and that, where appropriate, any court orders are complied with. If you have any questions about this please ask.
- **Football boots:** if anyone has any football boots their child no longer needs (for children in Y4-6), we would be grateful if you could donate them to the school so we have some spares in case of emergencies! Thank you.
- **Little Fishes Nursery Extended Funding:** Please can we remind you that in order for your child to access Extended FE in the Spring term their 30 hour code must be issued or renewed by HMRC by **31st December 2019**. To renew log in to their childcare account to check their details are up to date, and reconfirm their eligibility to ensure they continue to be eligible for Extended FE: gov.uk/sign-in-childcare-account For any queries please email free.entitlement@westsussex.gov.uk

Recycling Guide

This guide shows what you can and can't put in the bins. If you're not sure please feel free to ask.

	✓ What can go in	✗ What is not accepted
Crisp packets	✓ Any brand of crisp packet and multipack wrappers 	✗ Meat snack bags
Bread bags	✓ Any brand of bread bags 	<ul style="list-style-type: none"> ✗ Baguette packaging ✗ Bread roll packaging ✗ Bagel, pretzel & crumpet packaging ✗ Wraps, pitta breads, naans and garlic bread packaging ✗ Croissants, brioche and pastry packaging ✗ Teacakes, fruit loaves and scones packaging ✗ Pancake and waffle packaging
Pringles tubes	✓ 	✗ Any other brand of crisp tubes
Biscuits, cakes and crackers	✓ All brands of biscuit, cake and cracker wrapper including the individual wrappers. 	✗ The pre-formed plastic trays and tubs – these can go in your kerbside recycling bin at home.

Chocolate and confectionary

✓ All brands of chocolate and sweet wrappers



- ✗ Aluminium foil, cardboard and paper wrappers (e.g. foil and paper from fruit pastilles and smarties tubes). These can go in your kerbside recycling bin.
- ✗ Metal tins and rigid trays or tubs. These can go in your kerbside recycling bin.
- ✗ QUALITY STREET wrappers are biodegradable via home composting.

Snack wrappers

✓ All snack bar wrappers, popcorn & pretzel packets.



- ✗ NUT PACKETS – WE ARE NUT FREE SCHOOL SO PLEASE DON'T BRING THEM TO SCHOOL. You can take them directly to the drop off point at St Giles church.
- ✗ Seed packets
- ✗ Nutrient powder and topper packets
- ✗ Dried fruit packets
- ✗ Meat snacking packets

Toothbrushes and toothpaste tubes

✓ All toothpaste tubes including lids, empty floss containers, toothbrushes and electric toothbrush heads.



- ✗ Toothbrushes not made from plastic.
- ✗ Interdental brushes
- ✗ Dental floss
- ✗ Mouthwash bottles or lids
- ✗ Toothpaste pumps
- ✗ Denture products

<p>Writing implements</p>	<p>✓ </p>	<ul style="list-style-type: none"> ✗ Rubbers ✗ Rulers ✗ Pencils ✗ Scissors
<p>Pet food packaging</p>	<p>✓ All brands of plastic pet food packaging from wet or dry food. PLEASE WASH OUT WET FOOD POUCHES. They can go in the dishwasher top rack, hooked over plate prongs.</p> <p>1 All wet pet food pouches 2 All pet treat flexible plastic packaging and pouches 3 All dry pet food flexible plastic packaging</p> 	<ul style="list-style-type: none"> ✗ Metal cans ✗ Cardboard packaging ✗ Plastic trays
<p>Baby food and yoghurt pouches</p>	<p>✓ Baby food and yoghurt pouches and their lids</p> 	<ul style="list-style-type: none"> ✗ Please make sure lids are attached to prevent oozing/leaking.



Saturday 16th November 2019, 3pm-5pm
The Big Party!
Party themed craft, games, story and food.



Saturday 21st December 2019, 3-5pm
Messy Church Christingle

We make Christingles, a traditional decorated orange, used as part of a Christmas candlelit celebration. A tea party follows. This is a fundraiser for The Children's Society.

Come and join us at the Church of the Good Shepherd, Shoreham Beach



Secure Attachments - Robust Learners - Building Futures

Understanding Challenging Behaviour

Workshop for Parents and Carers

Wednesday 27th November 2019

1:30pm-3pm in the Small Hall

at [St Nicolas & St Mary CE Primary School](#)

Do you experience defiant behaviour at home?

Does your child have angry outbursts?

Would you like to better understand what may be behind these behaviours?

Learn strategies to support your child.

- * Workshop led by **Emma Connor, Child Psychotherapist and Director of Your Space Therapies**
- * Suggested donation of £5 per person
- * Limited number of places available

Please register your interest by emailing Mrs Nisbet at:

homeschoollink@stnm.org.uk

Places will be confirmed in due course.



Neither the Governors nor West Sussex County Council support or recommend the advice, products or services offered nor the organisations offering them. Individuals should satisfy themselves on the suitability of any of the advice, products or services and on the nature and standing of these organisations (or any mentioned in this bulletin or any other publication).

NOVEMBER 2019

Wishlist



EDIBLE ITEMS

COFFEE
SUGAR
SQUASH
JUICE
BISCUITS



MISC ITEMS

ANTI BAC SPRAY
BLEACH
TOILET CLEANER
TOILET ROLLS
TEA TOWELS
SLEEPING BAGS
BATH TOWELS
CLEAN & UNSTAINED
SINGLE DUVETS
CLEAN & UNSTAINED
PILLOWS



CLOTHING

MEN'S JEANS (SMALL WAIST)

DUE TO AMAZING RESPONSE WE NO LONGER NEED:

TOILETRIES

⚠ THE SIGER UNIT CLOSED MON 4 - FRI 8 NOVEMBER

14-16 Seldon Road, BN11 2LL

⚠ SAME TIMES - NO FURNITURE

Telephone in advance to confirm drop off times.

Phone: 01903 680740

Open from
11 November

THANKYOU

DELIVER TO:
Mon, Wed & Fri
9am-12:30
Unit 1
The Siger Close
Worthing
BN11 2EN



TURNINGTIDES
ZEHANG LOCAL, HOMELESSNESS

• DONATIONS @ TURNING-TIDES.ORG.UK | 01903 680740
Registered charity number: 1027853

GIGS 4 KIDZ

Party entertainment for all the family!

SATURDAY 16TH NOVEMBER
From 6pm – 9pm
at the Longshore pub, Shoreham

An evening of live music, singing & dancing fun for the whole family!

www.gigs4kidz.co.uk

DICE - Keeping your Child Safer in Sussex



Do you have a son or daughter aged between 9-14?

Are you concerned about their safety as they gain independence in today's globally connected, phone dependent and social media focussed world?

The 'DICE' Teen Safety Programme (made up of 4 x 2 hour sessions) from Barnardo's is here to support you.

Informative and non-judgemental, the programme aims to increase parenting knowledge & confidence related to teen safety, both on & off-line with practical ideas and solutions.

100% of parents/carers who have completed the course would recommend DICE to friends and family, they also said

"The content of the course was fabulous, very interesting and informative". "This course should be compulsory for all parents"

To book a free place or ask questions about the DICE programme;

Please email: dicereferral@barnardos.org.uk or call Sally on 07892 756 943

Shoreham Academy will be hosting TWO courses - either morning or evening.

4 Mornings: 19, 26 November & 3, 10 December 2019 10am-12pm

4 Evenings: 15, 22, 29 January & 5 Feb 2020 6:30-8:30pm



This is an independent event, and as such does not necessarily reflect the views of WSCC.



CHRISTMAS 2019 AT ST NIC'S

MON 25 NOV 7.30PM (SOLD OUT) & TUES 26 NOV 7.30
CHRISTMAS WREATH MAKING-
JOIN US FOR A CRAFTY
FESTIVE EVENING MAKING
YOUR PERFECT WREATH
WITH MULLED WINE & MINCE
PIES

FRI 15 NOV (KS1) & FRI 6 DEC
(KS2)
(TICKETS AVAILABLE SOON)
FESTIVE FILMS- GET INTO THE
FESTIVE SPIRIT WITH A
CHRISTMASSY FILM AND
SNACKS

SAT 7 DEC FROM 9AM
BREAKFAST WITH SANTA-
(TICKETS AVAILABLE SOON) COME
& HAVE BREAKFAST WITH SANTA.
TICKET INCLUDES CRAFTS, PHOTO
OPPORTUNITY & GIFT FROM THE
BIG MAN HIMSELF

FRI 29 NOV FROM 3.15PM
CHRISTMAS FAYRE.- JOIN
US FOR STALLS, SNOW
GLOBE BOUNCY CASTLE,
GAMES, REFRESHMENTS,
RAFFLE, TOMBOLA,
ELFRIDGES & MUCH MORE

TUES 17 DEC 2-3PM
MERRY MINCE PIES
ITS BACK AND BIGGER! DO
YOU HAVE AN ELDERLY
NEIGHBOUR/RELATIVE?
BRING THEM ALONG TO
THIS FESTIVE EVENT AT
SCHOOL WITH CAROLS AND
MINCE PIES

TICKETS VIA PTA-EVENTS.CO.UK/
STNICSPATA

St Nic's
PTA
supporting our children together



Thursday 19th Dec

£2.35

Festive Menu

Choose a main meal...

Roast Turkey
with Stuffing, Cocktail Sausage & Gravy
or
Quorn Fillet
with Stuffing Ball & Gravy

on the side...

Roast Potatoes
Peas and Carrots

for dessert...

Chocolate Dipped Shortbread
or
Fruit Salad

for a drink...

Fruit Squash
Milk
Water

To enjoy our festive-inspired day, please
order at www.mealselector.co.uk
by 8th December 2019 latest



FOLLOWING THE HUGE SUCCESS OF THE RAINBOW HAMPER...

CREATE A CHRISTMAS HAMPER

FILL YOUR HAMPER WITH SMALL FESTIVE
ITEMS BASED ON THE THEME BELOW...

- LFN - PENGUINS
- YR - REINDEERS
- Y1 - ELVES
- Y2 - STARS
- Y3 - ANGELS
- Y4 - CHRISTMAS TREES
- Y5 - SANTA CLAUS
- Y6 - SNOWFLAKES



**BOX
PROVIDED**

**COMPLETED
BY 22 NOV**

**NOT A
COMPETITION**

TO BE RAFFLED OFF AT THE CHRISTMAS FAYRE

ST NICOLAS & ST MARY SCHOOL
EASTERN AVENUE, SHOREHAM-BY-SEA



ST NIC'S CHRISTMAS FAYRE!

**FRIDAY 29 NOVEMBER
3.15 - 6PM**



**ELFRIDGES
IS BACK!**

**SNOWGLOBE
BOUNCY CASTLE**

**CAFE &
BAKERY**

**RAFFLE &
TOMBOLAS**

**ST NIC'S
CHOIR SINGERS**

**GAMES &
STALLS**



Shoreham Academy
The best in everyone™
Part of United Learning

CHRISTMAS CRAFT MARKET

THURSDAY 21ST NOVEMBER
6PM - 9PM

A variety of professional stalls
Fantastic gifts for everyone
Donation on entry

Refreshments available
Including a licensed bar

& a festive raffle!

The place to be:
Shoreham Academy
Kingston Lane
Shoreham-by-Sea
West Sussex
BN43 6YT

For any further information, please email
donna.churchill@shoreham-academy.org



CHARITY REG NO: 1027832



Festival of Trees

St Mary de Haura Church Shoreham-by-Sea

Saturday 30th November 10am-5pm

Sunday 1st December 11am-4pm

Crafts * Gifts * Raffle * Cakes * Refreshments

EVENT SPONSORS

Number One
MORTGAGES

JS
Jacobs | Steel



TURNING TIDES
ENDING LOCAL HOMELESSNESS

01903 680740
FUNDRAISING@TURNING-TIDES.ORG.UK

WWW.TURNING-TIDES.ORG.UK

Reaching Families

Empowering families of children and young people with special educational needs and disabilities

Ombrellas



a group for parent carers of children or young people with additional needs and disabilities.

**Durrington
Community Centre**
Tesco Complex
New Road, Worthing
BN13 3PB

Wednesday 20th November
Special Guest
Louisa Hargett

Specialist Occupational Therapist
and Trainer who delivers our popular
workshop on Issues around Food

Come along to our friendly
Parent-Carer Support Group
where you can talk freely and get
information that is relevant to
your child and family

9:30-11am

Louisa will begin with an overview
to cover the common areas of
concern surrounding food such as
selective eating and sensory
processing difficulties followed by
an open discussion.
This will be an informal session and
will be tailored as much as possible
to issues raised by those parent-
carers in attendance

For further information please contact:

Hannah@reachingfamilies.org.uk

Or by mobile on 07951 794734



Unit 16, Oaklands Business Centre, 64-68 Elm Grove, Worthing, West Sussex, BN11 5LH Tel. 01903 366360

Email. admin@reachingfamilies.org.uk

www.reachingfamilies.org.uk

Registered Charity, No: 1150906 Company Limited by Guarantee, No: 8261096

www.westsussex.gov.uk/admissions



Was your child born between 1 September 2015 and 31 August 2016?

If so they are eligible to start
school in September 2020.

Apply online!

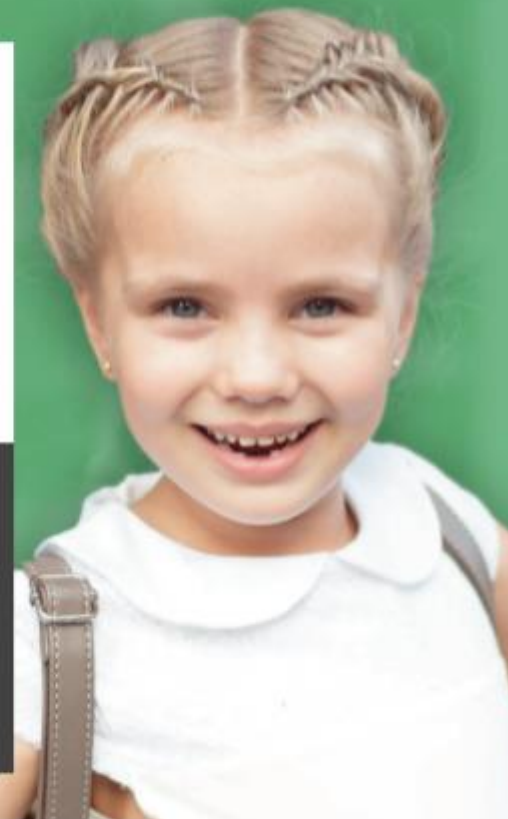
It's simple, convenient
and timesaving. If your
application is received after
the deadline of Wednesday
15 January 2020 your chance
of securing a place at one of
your preference schools could
be seriously affected.

You can apply online from Monday
7 October 2019. If you would like
further advice or information contact:

03330 142 903

Free internet access to apply
online is available at all:

- West Sussex libraries
- Children and Family Centres



WS1080 08.2019

Apply online at:

□ www.westsussex.gov.uk/admissions

Deadline: Wednesday 15 January 2020





**FREE
STREET
CRICKET
AGE 9-13**

- All abilities welcome
- Explosive action
- No equipment needed
- Wear what you want



WHERE:
Southwick Leisure Centre, Southwick
WHEN:
Every Tuesday, 4PM - 5:30PM
Starting 24th September 2019
CONTACT:
Alex King
alex.king@sussexcricket.co.uk



Chance to Shine Street Registration Form

Information Required for Programme Monitoring
To be completed by parent or guardian for children under the age of 18

First name	<input type="text"/>			
Surname	<input type="text"/>			
Date of Birth	date / month / year			
Postcode	<input type="text"/>			
School	<input type="text"/>			
Gender	Male	<input type="checkbox"/>	Female	<input type="checkbox"/>
Ethnicity	White British	<input type="checkbox"/>	Black Caribbean	<input type="checkbox"/>
	White European	<input type="checkbox"/>	Black African	<input type="checkbox"/>
	Pakistani	<input type="checkbox"/>	White and Black Caribbean	<input type="checkbox"/>
	Indian	<input type="checkbox"/>	White and Black African	<input type="checkbox"/>
	Sri Lankan	<input type="checkbox"/>	White and Asian	<input type="checkbox"/>
	Bangladeshi	<input type="checkbox"/>	Chinese	<input type="checkbox"/>
	Afghani	<input type="checkbox"/>	South American	<input type="checkbox"/>
	Arabic	<input type="checkbox"/>		<input type="checkbox"/>
Other	<input type="checkbox"/>		<input type="checkbox"/>	
If other, please add here:				

Are they currently a member of a local cricket club?	Yes	No
Do they currently attend a lunchtime or after school sport club/team at least once a week? (Not in a PE lesson)	<input type="checkbox"/>	<input type="checkbox"/>
Other than Chance to Shine Street, do they currently attend a sport club/team outside of school at least once a week?	<input type="checkbox"/>	<input type="checkbox"/>

Personal information provided will only be used anonymously for the purposes of evaluating the programme demographics. Full details of our privacy policy can be found on our website. www.chancetoshine.org/privacy W - www.chancetoshine.org/street F - www.facebook.com/chancetoshinecricket T - @Chance2Shine

Information Required by Coaches for Child Welfare

Personal information provided will only be used to contact you when necessary regarding involvement in the Chance to Shine programme and will not be shared.

Emergency Contact Name

Relationship to Participant

Emergency Phone Number

Medical Conditions / Requirements?
.....
.....