

1. Dates & Events

Event	Yr	Date	Time
Parent/Carer consultations	YR – 6	Monday 21 st October	3.40 – 6pm
Drama4ALL workshops	EY/KS1	Tuesday 22 nd October	All day
Y1 SD trip to Library – <i>parents/carers to pick up from the library at 2.45pm</i>	Y1 SD	Wednesday 23 rd October	1 – 2.45pm
Tour for prospective parents/carers (4)		Wednesday 23 rd October	6.45 – 8pm
YR (pm) & Y2 (am) Open Box Theatre Workshops	YR & Y2	Thursday 24 th October	All day
Y1 DD trip to Library – <i>parents/carers to pick up from the library at 2.45pm</i>	Y1 DD	Thursday 24 th October	1 – 2.45pm
PTA – Cake Sale	All	Thursday 24 th October	3 – 3.30pm
Y5 visit from Rainbow Theatre – Child in Ancient Greece	Y5	Friday 25 th October	9.15–11.45am
Half-term		Mon 28 th Oct – Fri 1 st Nov	
INSET Day (school closed for pupils)	All	Monday 4 th November	All day
Tour for prospective parents/carers (5)		Tuesday 5 th November	9.15–10.15am

Don't forget to check the dates for the whole term on the website!

2. NEW DATES / AMENDMENTS TO DATES:

- **Prayer Space Week:** Monday 18th November
- **PTA AGM and Meeting:** Wednesday 20th November, 1pm
- **Y3 Science Showcase:** Wednesday 4th December, 9.15 – 9.45am

INFORMATION ABOUT UPCOMING EVENTS

- **Parent & Carer Consultations:** Please do not bring your children with you as there is no supervision available and no room for them in the hall. School is open and insecure during this time.
Survey: Thank you to all those who completed an 'Ofsted Survey' at our first parent consultation evening. Further copies will be available at our next consultation evening as well as from the school office. We appreciate your feedback but please return by half term. Mr Etherton
- **PTA Cake Sale:** the PTA would welcome cake donations on the morning of Thursday 24th October for the cake sale after school. Donations can be brought to the school office.
- **INSET Day:** don't forget that Monday 4th November is an INSET day so the school is closed for pupils. Children start back on Tuesday 5th November.

3. **Letters sent home this week:** No letters sent home this week! Click on the link to see past letters <http://www.stnicolasmary.w-sussex.sch.uk/page/?title=Letters+Sent+Home&pid=56>

4. **Clubs:** to check if clubs are running, see the *Extra-curricular Activities* page on the website [Extra-Curricular Activities](#)

- No Art club – Tuesday 22nd October 2019
- No Dance club – Tuesday 22nd October 2019

5. **Worship & Ethos:** 'My dear brothers and sisters. Take note of this: Everyone should be quick to listen, slow to speak and slow to become angry' **James 1:19**

Messy Church: The Church of the Good Shepherd, Kings Walk, Shoreham Beach. Saturday 19th October from 3pm – 5pm. Craft, story, song, games, food, family and celebration. This month's theme is 'Let your light shine'. Suggested donation £2-£5 per family.

6. **Every Mind Matters:** The NHS have produced a new tool, featuring 5 quick questions, which provides advice to help you to protect your mental health, do have a look: <https://www.nhs.uk/oneyou/every-mind-matters/your-mind-plan-quiz/>

7. **Teaching Assistant Job Vacancy:** Please see the advert at the end of this bulletin. Click on the link: www.westsussex.gov.uk/living/jobs/working_for_us/teacher_recruitment/school_job_search.aspx

8. **Applying for a school place for September 2020:** parents & carers applying for a place need to:
 - Complete the County Admissions Form (online) by Wednesday 15th January 2020 (compulsory). www.westsussex.gov.uk/admissions
 - Complete and return the Supplementary Information Form to school by 4pm on Wednesday 15th January 2020.
 - If you are a regular worshipper, please ask your Minister / Priest to complete the Church Support Form, and ask him/her to return the form to the school by 4pm on Wednesday 15th January 2020.
9. **Sponsor a computer:** the computers in our IT suite are now over 8 years old. We are hoping to replace them by the end of this term with either new or refurbished 'good as new' computers. If you or your company would like to sponsor a computer, please be in touch. Alternatively, please **Please** do support the PTA in fundraising efforts in the run up to Christmas. We already have the cost of 10 computers covered – just need another 22! A letter with more information about this will be sent out in due course.
10. **Personal, Health, Social & Economic (PSHE) and Education Relationship & Sex Education (RSE):** We need to update our PSHE and RSE education to support parents, carers and their children in an ever-changing world. In addition, the government has published new requirements that will need to be implemented for September 2020. After half term, parents and carers will be invited to an informal parent forum (date tbc) to find out more and share ideas. For more information, please visit [Relationships-sex-and-health-education-guides-for-schools](#) We will also be taking into account Church of England guidance: [Valuing All God's Children](#) If you have any comments, please speak to Mr Etherton or Mrs Bishop or email the school office for their attention.
11. **House Best Points Reward:** As a reward for **RED** House winning the Summer Term Best Points prize we have decided to allow the **RED** house children to come into school on Friday 25th October in non-school uniform. The children should know if they are in Red House, however to ensure this is clear we will send a text out to the parents/carers of these children as a reminder on Thursday next week.
12. **Christmas Charity Projects:** as a school we always like to think about how we can give to those in need in the run up to Christmas.
 - For many years we have collected a magnificent number of shoe boxes, filled with small gifts, which have brought great joy to families in Romania. We will continue to do so this year and welcome your support! If you are interested in making one, please collect a leaflet from Reception, which contains all the instructions.
 - In addition, we are also mindful of the large number of homeless people who are in difficulty much closer to home on our local streets. We are in touch with a local homeless charity and will be sending out information about the kind of items they need shortly after half term.
 - If you are able to make a shoe box **OR** provide a small donation to the local homeless then this would be absolutely fantastic. All shoe boxes will need to be in school by Thursday 14th November, however we will launch the homeless charity appeal throughout next half term. Many thanks for your support.
13. **Requests & Reminders**
 - **Bikeability:** the Road Safety Team are looking for feedback from parents/carers regarding the Bikeability service and how much it is valued. Whether your children have already undertaken the training or will be doing this in the near future, your views and opinions are vital in helping VWS to secure future funding and improve the service they are able to offer. Please click on the link: <https://haveyoursay.westsussex.gov.uk/highways-and-transport/3c5d2030/> Once the survey has been completed, parents leaving their contact details will be entered into a free 'Prize Draw' to win a £25 voucher of their choice (terms and conditions apply).
 - **Road Safety:** It's darker, wetter and busier on our roads and pavement. We have had a few reports from neighbours and other parents about children being insufficiently supervised and inconsiderate parking near the school. Please take care and please respect our neighbours.
 - **Reception:** please wait for a member of staff to open the gate to the Early Years area in the mornings. A member of the Senior Leadership Team will ring the bell when it is time for the children to come in and a member of the EY team will then come and open the gate.
 - **Emails to the school office:** the office receives a staggering amount of emails on a daily basis. We appreciate that sending an email is very quick and easy to do but could we please ask you to check the website for answers to any queries before sending it, eg if clubs are on, cost of breakfast and after school clubs, dates of events, details about trips, making payments etc. If you do not find what you need on the website, then of course please do email and we will endeavour to respond as quickly as possible.
 - **Appointments during the school day:** we have had a huge amount of children absent from school due to appointments this term eg dentist, doctor, optician etc. We realise that it is sometimes necessary for emergency doctor or hospital appointments, however, we would like to ask you if at all possible to please make appointments outside of the school day. In addition, if a child has an appointment at the end of the school day and needs to be collected early, please do not ask to collect a sibling early too but make arrangements for someone else to collect them. This week alone we have had four children collected early as their sibling had an appointment. It is a legal requirement for children to be in school for the whole day. We do appreciate your cooperation with this.



*have
your
cake*
AND EAT IT TOO

CAKE SALE
OCTOBER 24TH

Donate cakes
Buy cakes
Eat cakes

Support St Nic's PTA in helping
to improve our schools facilities

All Cakes gratefully recieved... baked or bought we don't care!
Please leave all cake donations at School office from the 23rd.

 **ST NICOLAS AND ST MARY**
CE PRIMARY SCHOOL

 **St Nic's
PTA**



St Nicolas and St Mary Church of England Voluntary Aided Primary School

Eastern Avenue, Shoreham-by-Sea, West Sussex BN43 6PE

Tel: 01273 454470 Email: office@stnm.org.uk

Web: <http://www.stnicolasmary.w-sussex.sch.uk/>

Headteacher Mr D Etherton B.Ed Hons. NPQH

Associate Headteacher Mr A Lincoln BA Hons.

ADVERT – Teaching Assistant

St Nicolas and St Mary C.E. Primary School is an award winning school and an excellent place to work. We have a very friendly, dedicated staff team and well-behaved children. Our classrooms are large and we have spacious grounds. The school has a brand new teaching block, refurbished classrooms and an extended school hall.

Ofsted inspected the school in March 2017 and recognised that the school continues to offer a GOOD quality of education and safeguarding is effective. The inspection noted children's good behaviour and excellent attitudes to learning. In December 2016 the school, as a Church of England school in the Diocese of Chichester, received a 'SIAMS' inspection and was judged to be "outstanding".

We are seeking to recruit an additional Teaching Assistant to work in our school from November 2019 (or sooner if available). We have some limited flexibility in the hours we can offer.

Teaching Assistant

Location: St Nicolas and St Mary C.E. Primary School, Shoreham-by-Sea

Required from: November 2019 or sooner if available

Contract: Temporary (until July 2020), Full-time, Term time only
(Possibility of becoming permanent)

Hours per week: Minimum of 25 hours (**Ideally 30 hours**) (these include some Midday Meals Supervisor duties)

Salary: Grade 3 Point 3 (£9.36 per hour)

Please refer to the Job/Person Specification in your supporting statement and indicate which days you are available for work.

It is desirable, but not essential, to have experience of:

- Experience of working in Key Stage 1 and 2
- Experience of working with SEND pupils

Relevant qualifications or training an advantage but not essential.

The closing date for all applications is **12 noon on Monday 21st October 2019** (email to office@stnm.org.uk or post to above address).

Interviews are scheduled to take place **Thursday 24th October 2019**

Please contact the office for an application pack or visit:

www.westsussex.gov.uk/living/jobs/working_for_us/teacher_recruitment/school_job_search.aspx

The successful applicant will need to undertake an Enhanced Disclosure via the Disclosure and Barring Service (DBS) and references will be checked prior to interview. This school is committed to safeguarding and promoting the welfare of children and expects all staff to share this commitment.



It is time to start thinking about the 'SHOEBOX APPEAL' again. We really hope that you are able to help us with this amazing charity project.

Every year we have managed to send over 100 boxes to families in Eastern Europe.

In these countries the people cannot celebrate Christmas or Birthdays with presents as they do not have any spare money and instead look forward to a '***SHOEBOX DAY***'.

A bar of chocolate or a scented candle is considered a luxury to these families. A trip to the pound shop or section of your local supermarket is always full of the perfect gifts, such as new toothbrushes, shower gel or pens. Please make sure your shoebox is full and that the contents don't rattle around – eg pack out the box with some socks or a flannel or scarf and gloves.

Sadly we have to discard a number of shoe boxes each year because the contents are old and dirty and so please take care in selecting the right things.

Many, Many Thanks for your continued support in helping put a smile on the families that receive these fantastic, Christmas boxes. It really does make a difference to their lives.

Please bring your filled shoeboxes to school on or before November 14th for collection by Mrs. Kennard.

www.westsussex.gov.uk/admissions



**Was your child born between
1 September 2015 and 31 August 2016?**

If so they are eligible to start
school in September 2020.

Apply online!

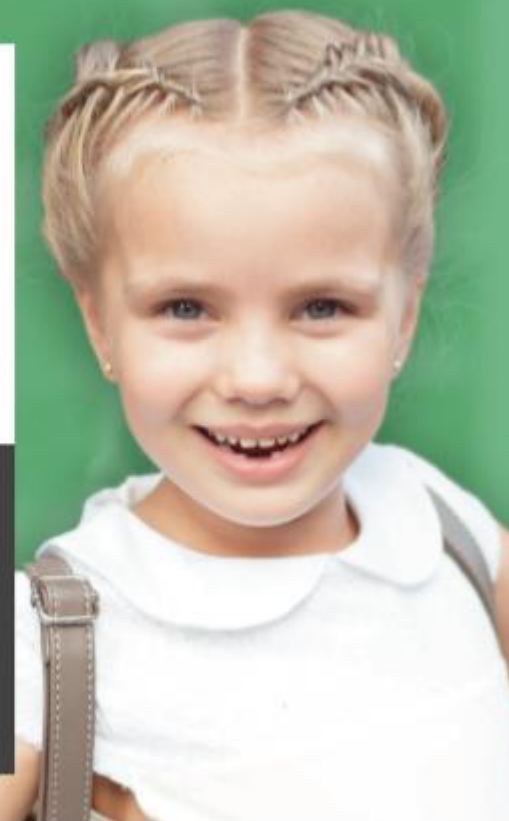
It's simple, convenient and timesaving. If your application is received after the deadline of Wednesday 15 January 2020 your chance of securing a place at one of your preference schools could be seriously affected.

You can apply online from Monday 7 October 2019. If you would like further advice or information contact:

03330 142 903

Free internet access to apply online is available at all:

- West Sussex libraries
- Children and Family Centres



WCS1600 08.2019

Apply online at:

□ www.westsussex.gov.uk/admissions

Deadline: Wednesday 15 January 2020





AGM

Followed by PTA meeting

Weds 20th November 2019
at 1.00pm

Come and meet other parents and your friendly committee members, have a cuppa and a piece of cake and find out more about your PTA.

All Welcome!



Registered Charity No. 291223

Annual General Meeting

Wednesday 20th November 2019 at 1pm
at School

1. Agree minutes of the PTA AGM held on Wednesday 14th November 2018
2. Matters arising from minutes of previous AGM
3. Chair's report (SL)
4. Financial report for the year ending 31 December 2018 (JP)
5. Re-appointment of Independent Examiner of Accounts
6. Election of Officers and Trustees of the Committee
 - Chair and/or Co-Chair(s)
 - Secretary and/or Co-secretary
 - Treasurer and/or Co-Treasurer
 - Core Committee Members
7. AOB

STAY FOR A SCHOOL LUNCH

DURING

NSIMW 2019
NATIONAL SCHOOL MEALS WEEK

JOIN US
ON

Wednesday 13th November

THE
MENU
WILL BE

Choose a main meal...

Roast Chicken in Gravy
with Roast Potatoes

Whole chicken breast in gravy
Quorn Balls in Gravy with
Roast Potatoes v
Quorn balls in a vegetarian gravy

Jacket Potato with
Cheese v

on the side...

Seasonal
Vegetables

for dessert...

Muesli Flapjack

Fruit Salad

The school with
the most meals
eaten on this day*
WINS a free
Christmas dinner
for every child in
your school!



Book yours online by Friday 1st
November at
westsussex.mealselector.co.uk

*by percentage

The United Benefice of Old Shoreham and Kingston Buci



FREE LUNCH CLUB
FOR THE YOUNG AND YOUNG AT HEART,
6 MONTHS TO 99 YEARS

TUESDAY 29TH AND WEDNESDAY 30TH OCTOBER

12 PM - 1PM

ST JULIAN'S CHURCH HALL
RECTORY ROAD,
SHOREHAM BY SEA
WEST SUSSEX
BN43 6EB



DONATIONS TOWARDS COSTS WELCOME
CONTACT FR. JAMES GRANT ON 01273 593167 TO BOOK



Would you like to have your Artwork displayed to the public?

The Skyway Gallery & Over the Moon are giving YOU the chance to create and exhibit a variety of artwork on the subject of pollution and climate change as part of a wider reclaim festival in Shoreham. The exhibition will run for 2 weeks from the 18th of May.

You also get the chance to win a prize as all the artwork displayed will become part of our competition.

There are three ways you can take part...

1. Designing and creating a recycled sculpture of an animal out of waste materials such as plastic as part of a large group

This can be any creature made out of any recycled materials, just as long as they are safe to use

2. Making a short film about the effects of climate change using a smart phone or similar device individually or as part of a group

Films must be no longer than 90 seconds & under 18's need parental permission to take part

3. Submitting a 2D art piece of your choosing

This can be any art form such as a painting, photograph or collage as long as the piece is related in some way to pollution & climate change

To become a part of the project please fill out our participation form. To learn more, please read our information sheet or contact us at galleryassistant@skywaygallery.org You can also visit our website and social media pages www.weareoverthemoon.org/reclaim or www.facebook.com/reclaimadur

After School @ The Moon Space

Tuesdays

Art Club:

Get creative, learn about techniques, experiment with materials and make all sorts of art
3.45-5.15pm, drop off. Age 8+
Advance block booking. £10 per session.



Wednesdays

Sewing Club:

Learn simple sewing using felt and canvas and make things to take home
3.45-4.45pm, drop off optional. Age 6+
Advance booking.

Fridays

Friday Club:

Drop in and hang out with construction and games
Drop in between 3.30 and 5pm
All ages, £3 per child.

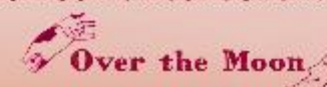


@ The Moon Space,

8 Tarmount Lane, Shoreham-by-Sea BN43 6DA

Hot and cold drinks for sale before and during sessions.

More info and booking at www.weareoverthemoon.org and [facebook.com/weareoverthemoon](https://www.facebook.com/weareoverthemoon)





extratime FAMILY FUN DAY



Heron's Dale School, Hawkins Crescent, Shoreham-by-Sea, West Sussex, BN43 6TN

For children and young people with & without disabilities, their families & friends.

Fully accessible toilets and changing facilities with a hoist are on site.

Free parking.

- Make music and sounds with Dan the Music Man
- Meet Animazing and their friendly animals
- Learn Magic Tricks with Tony The Magician
- Arts & Crafts
- Ball pool and soft play
- Light snacks for sale and picnics welcome
- ...and lots more!

SUNDAY
20th October 2019
10am – 4pm
No need to book!

We look forward to seeing you!



"Thank you for providing these fun days that the whole family can attend"
Extratime parent.

Suggested donation of £6 per child – parents & carers free!



"Welcoming and inclusive atmosphere, friendly staff"
Extratime parent.



For more information please contact Hello@extratimebrighton.org.uk or call us on 01273 420 580

Registered Charity No. 1118203



Are funds running low?

Does your child need a warm, waterproof and machine washable coat?

We have these for 2 to 11 year olds

How can I get one?

Outside the Co-op Community Space (opposite the Co-op store on Ham Road) there is a rail of children's coats, in a range of sizes. Please come and choose one and take it away.

When can I get one?

From Monday 21st October

Every Monday 9.30 to 12.30

Every Friday 9.30 to 12.30

Every Saturday 9.30 to 12.30

Also, from 28th October – 1st November, during half term,

Build a Lunch will be running from

12.30 to 1.30 Monday to Friday

Come along and have sandwich lunch, free of charge, in the Co-op Community Space

Neither the Governors nor West Sussex County Council support or recommend the advice, products or services offered nor the organisations offering them. Individuals should satisfy themselves on the suitability of any of the advice, products or services and on the nature and standing of these organisations (or any mentioned in this bulletin or any other publication).

Our commitment to
healthy eating
in our schools

Chartwells have been providing tasty and nutritious school lunches in partnership with West Sussex schools since 2006. In addition to great food and service our dedicated nutritionists bring food to life through our Eat Right, Stay Bright nutrition education programme. To find out more about school lunches, visit us at www.mealselector.co.uk and choose West Sussex.

We can adapt our menus to meet **special dietary requirements** so that school meals can be enjoyed by all children.

We're proud that all our menus **meet or exceed Government food and nutrition standards.**

Wherever possible we **minimise and eliminate food additives** in the school meals we serve.

The rigour in our sourcing means that we can **trace all our products back to source.**

Our very own team of nutritionists develop all our menus to ensure **balanced and healthy choices.**

All paid meals to be ordered a full week in advance of the entire week they are required, either online by midnight Sunday or via telephone by 3pm on Friday. Terms and conditions apply. Please see our website or contact us for more information. Menu items are subject to availability. TO ORDER visit www.mealselector.co.uk. To report sickness on the day of your meal booking, please call by 10.30am on 01243 773239 (messages only). For special diet information, please contact westsussexspecialdiets@compass-group.co.uk

Autumn 2019/
Winter 2020
Steam WS

Food Super Heroes Menu



Chartwells
EAT LEARN LIVE

Week one

04/11 25/11 16/12 06/01 27/01 17/02 09/03 30/03

Monday

Beef Pasta Bolognese

Fusilli pasta in a traditional beef sauce

on the side...

Garden peas
Salad

Bean, Potato & Lentil Hotpot (vg)

Served in a rich tomato sauce with diced potatoes

for dessert...

Honeydew melon
slices
Fruit salad

Jacket Potato with Cheese V

Tuesday

Chicken Korma & Rice

Diced chicken in a mild korma sauce with wholegrain rice

on the side...

Green beans
Salad

Cheese & Sweetcorn Pasta V

Cheese sauce, sweetcorn & broccoli with pasta tubes

for dessert...

Yoghurt & granola
Fruit salad

Jacket Potato with Baked Beans V

Wednesday

Roast Ham in Gravy with Roast Potatoes

Sliced ham in gravy

on the side...

Seasonal vegetables

Quorn Sausage in Gravy with Roast Potatoes V

Vegetarian sausage in vegetarian gravy

for dessert...

Cranberry shortbread
Fruit salad

Jacket Potato with Cheese V

Thursday

Cheese & Tomato Pasta V

Cheese sauce & tomatoes with fusilli pasta

on the side...

Mixed vegetables
Salad

Butternut Squash & Chickpea Curry & Rice (vg)

Chunky vegetables in a mild korma sauce

for dessert...

Yoghurt & Fruit slices
Fruit salad

Jacket Potato with Tuna Mayo

Friday

Fish & Chips

Traditional battered fish fillet

on the side...

Garden peas
Salad

Quorn Burger in a Bun & Chips V

Quorn patty in a bun with optional ketchup

for dessert...

Mandarin marble cake
Fruit salad

Jacket Potato with Cheese V

Week two

1/11 02/12 23/12 13/01 03/02 24/02 16/03 06/04

Macaroni Cheese V

Traditional cheese sauce with macaroni

on the side...

Green beans
Salad

Salmon Paella

Diced salmon in a vegetable wholegrain rice paella

for dessert...

Yoghurt & granola
Fruit salad

Jacket Potato with Baked Beans V

Sausages, Mash & Gravy

Pork & Beef sausages in gravy with mash potato

on the side...

Garden peas
Salad

Veggie Pasta Bolognese V

Fusilli pasta with a vegetarian bolognese sauce

for dessert...

Farmhouse fruit
slice & custard
Fruit salad

Jacket Potato with Tuna Mayo

Roast Chicken in Gravy with Roast Potatoes

Chicken breast fillet in gravy

on the side...

Seasonal vegetables

Quorn Balls in Gravy with Roast Potatoes V

Vegetarian balls in vegetarian gravy

for dessert...

Muesli Flapjack
Fruit salad

Jacket Potato with Cheese V

Cheese & Tomato Pizza V

Deep pan pizza with a cheese & tomato topping

on the side...

Mixed vegetables
Salad

Savoury Mince Beef & Mash

A rich beef mince with mash potato

for dessert...

Yoghurt & Fruit slices
Fruit salad

Jacket Potato with Tuna Mayo

Fish & Chips

Traditional battered fish fillet

on the side...

Baked beans
Salad

Omelette & Chips V

Traditional omelette, back by popular request

for dessert...

Cranberry shortbread
Fruit salad

Jacket Potato with Cheese V

Week three

£2.35

18/11 09/12 30/12 20/01 10/02 02/03 23/03 13/04

Chicken Tikka & Rice

Diced chicken in a mild tikka sauce

on the side...

Garden peas
Salad

Quorn Sausage & Bean Hotpot with Diced Potatoes V

Quorn sausage & mixed beans in a tomato sauce

for dessert...

Mandarin marble cake
Fruit salad

Jacket Potato with Cheese V

Macaroni Cheese V

Traditional cheese sauce with macaroni

on the side...

Mixed vegetables
Salad

Cauliflower, Lentil & Sweet Potato Masala & Rice (vg)

Chunky vegetables in a mild masala sauce & wholegrain rice

for dessert...

Yoghurt & Fruit slices
Fruit salad

Jacket Potato with Tuna Mayo

Roast Beef in Gravy with Roast Potatoes

Sliced beef & gravy

on the side...

Seasonal vegetables

Quorn Sausage in Gravy with Roast Potatoes V

Vegetarian sausage in vegetarian gravy

for dessert...

Farmhouse fruit
slice & custard
Fruit salad

Jacket Potato with Cheese V

Cheese & Tomato Pizza V

Deep pan pizza with a cheese & tomato topping

on the side...

Green beans
Salad

Ham & Sweetcorn Pasta

Chunky ham in a white sauce with pasta & sweetcorn

for dessert...

Muesli Flapjack
Fruit salad

Jacket Potato with Tuna Mayo

Fish & Chips

Traditional battered fish fillet

on the side...

Garden peas
Salad

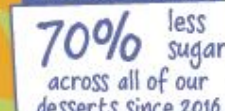
Quorn Burger in a Bun & Chips V

Quorn patty in a bun with optional ketchup

for dessert...

Yoghurt & granola
Fruit salad

Jacket Potato with Cheese V



October Half-Term Swimming Lessons

The Globe Primary School, Irene Ave, Lancing

5 Day Intensive Courses

ONLY
£80



Maximum 6 children per class
Children aged 3 to 12 years
Beginners, Improvers & Advanced
Structured, safe & most of all FUN!

Book Online:

www.seriouslyfun.com

or call: 01273 950015

Teachers required • Full training given



October Half-Term Course

Intensive courses are great for building confidence!

Did you know? It has been shown that children learn and retain new skills more easily over short, intensive periods of time.

October half-term course

Venue: The Globe Primary School, Irene Ave, Lancing, BN15 9NZ

Age: 3 to 12 years (Beginner to Advanced)

Dates: Mon 28th October to Fri 1st November

Times: 9.30am to 11.30am (30 minute lessons between these times)

Fees: Only £80 per child!

We also run weekly term time courses

Children's weekly swimming lessons during school terms

Juniors: Age 3 to 12 years (Beginners to Advanced)

Venues: Great Walstead School, Haywards Heath • The Globe Primary School, Lancing • Roedean School, Brighton

Teaching your child to swim in a safe and FUN Way!

Book Online:

www.seriouslyfun.com

or call: 01273 950015



facebook.com/seriouslyfun



@sfunswim

