

Fantastic Flowers





WALT

- Name the different parts of a flower and explain their role in pollination and fertilisation.

Success Criteria

- I can identify the different parts of a flower.
- I can explain what each part of a flower does.
- I can explain the process of pollination.
- I can explain how pollination leads to fertilisation.

What is a Flower?



Have you ever wondered why plants have flowers?

You have probably all seen flowers before.

But do you know what the different parts of a flower are for?

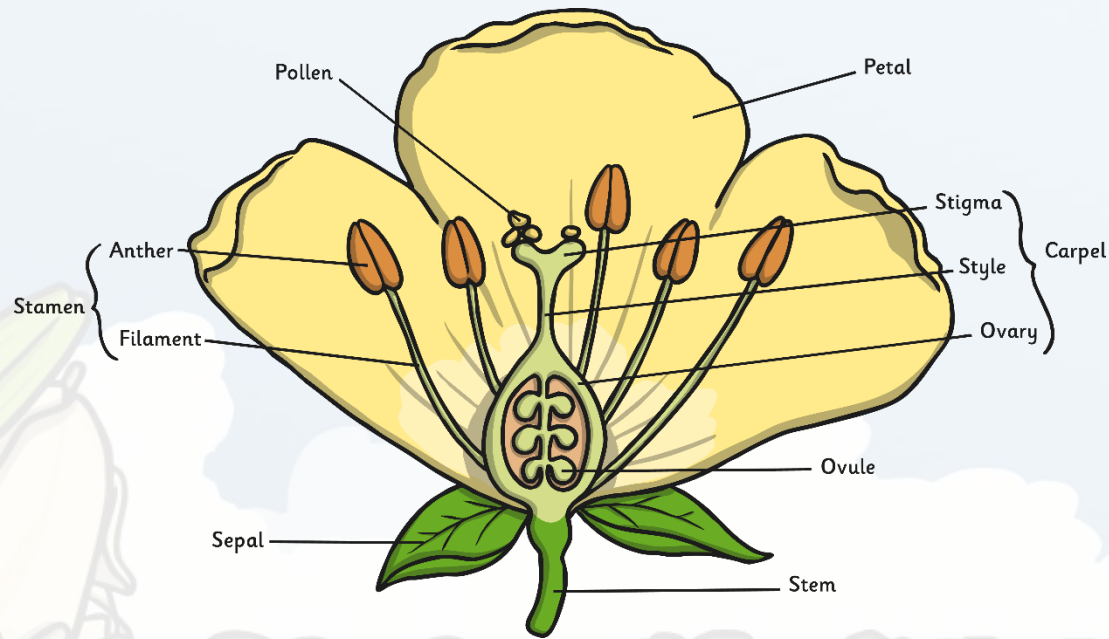
This lesson will help you find out!



Photo courtesy of Balaji Photography - 2.6 Million Views and Growing (@flickr.com) - granted under creative commons licence — attribution

What is a Flower?

The flower's job is to create seeds so that new plants can be grown. Flowers are made up of lots of parts that work together to make seeds.

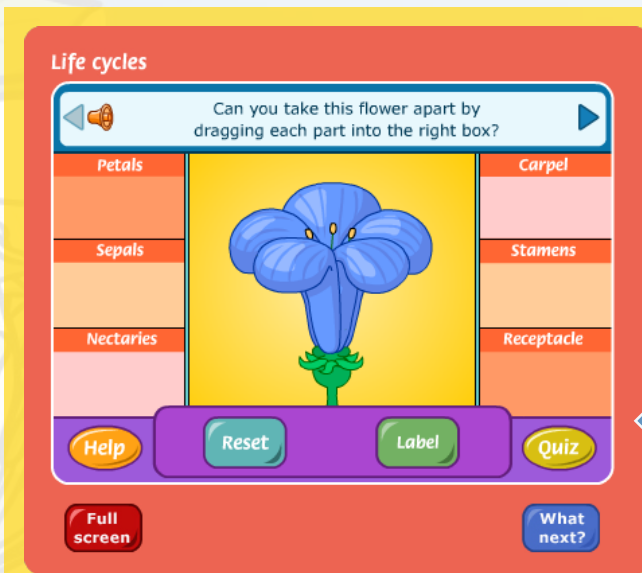


What Jobs Do They Do?



Each part of the flower has a special job to do in order to make seeds.

The activity on the website below will give you another chance to identify the different parts of a flower, and you can find out more about what job each part does.

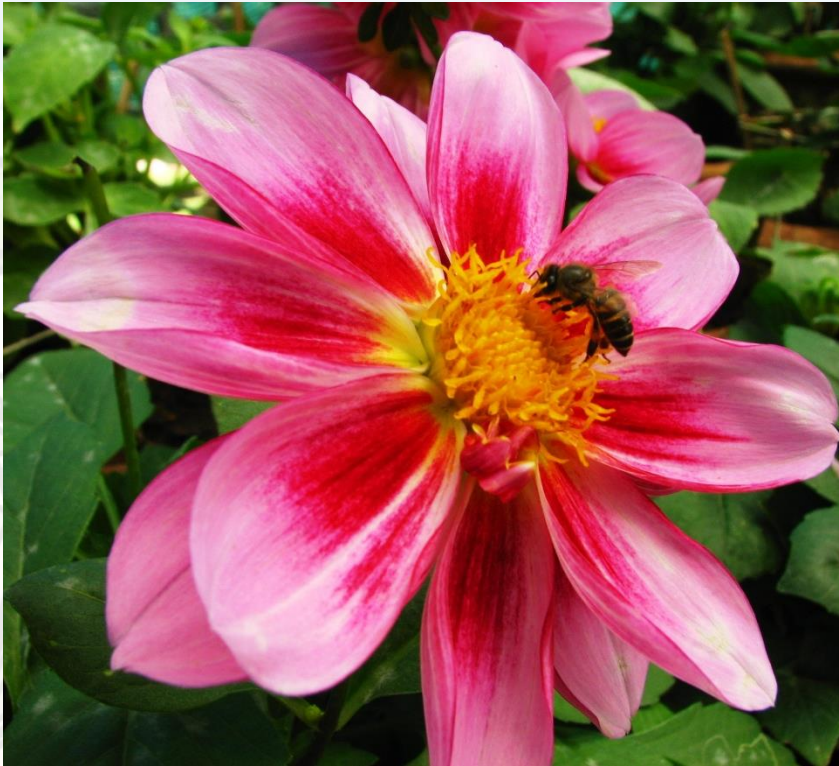


Once you have found out what the different parts of a flower do, complete your Parts of a Flower Activity Sheet.

Click on the preview to go to the activity.

Pollination and Fertilisation

Pollination occurs when pollen from the anther is transferred to the stigma.



Insects like bees and butterflies are attracted to the bright colours of the petals and the sweet scent of the flower.

They visit the flower to drink a sweet liquid called nectar.

Pollination and Fertilisation

When an insect goes into the flower to drink the nectar, some grains of pollen brush off the anthers onto their body.

When the insect visits another flower for more nectar, the grains of pollen transfer from the insect's body to the sticky stigma of the new flower.
This is pollination.



Pollination and Fertilisation

The pollen on the stigma then travels down the style towards the ovary.



Stigma

Style

Pollination and Fertilisation

Once it reaches the ovary, the pollen joins with an ovule.
The ovule can then grow into a seed. This is known as fertilisation.

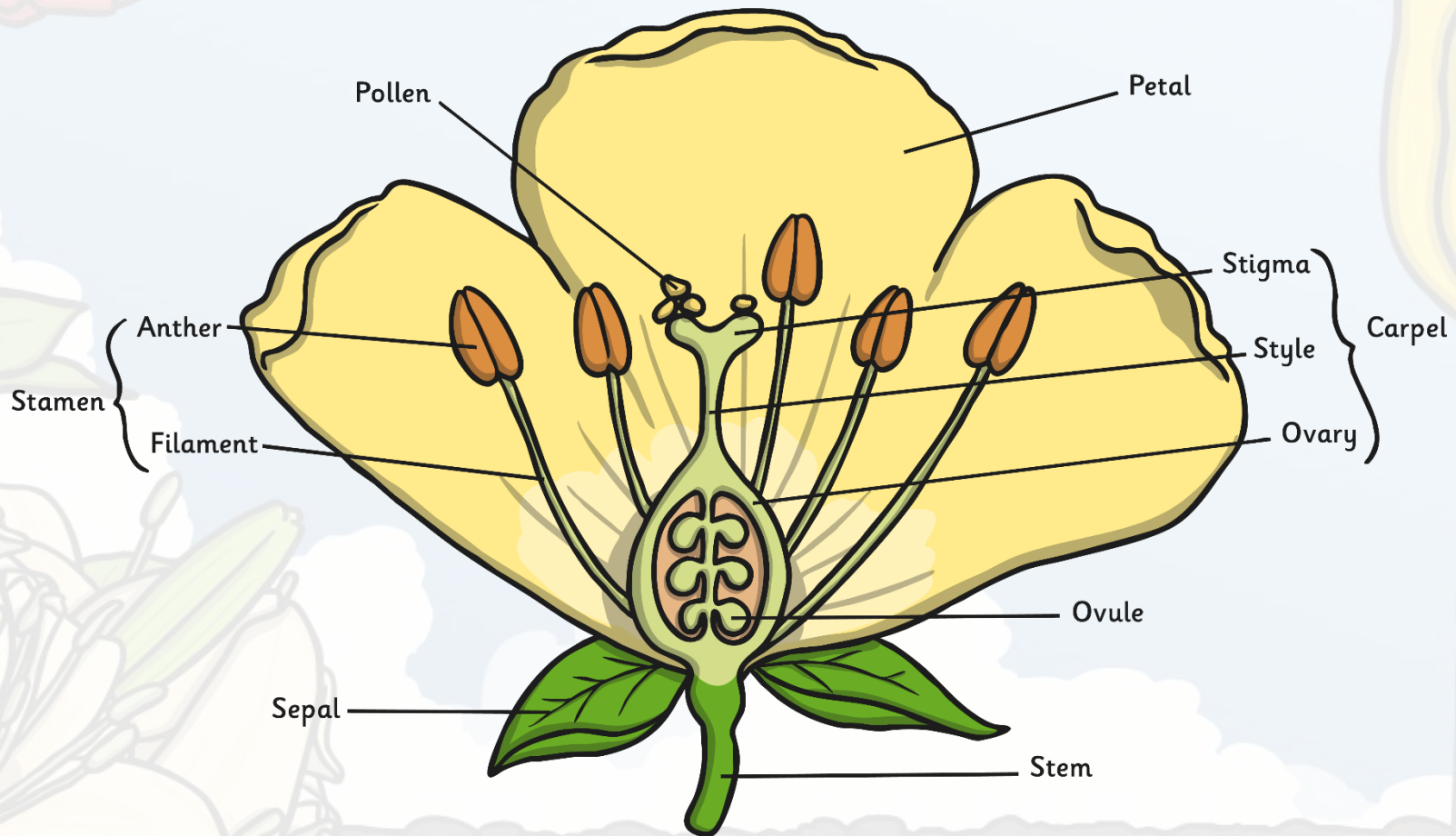


Poppy seeds
grow inside
the enlarged
ovary.



Pea seeds
grow inside
the ovary,
or the pea
pod.

Dissect a Flower



Task: Use the picture of the flower to spot and label all of the different parts of the flower.



You can either download this picture from the website or draw your own (remember to copy each part carefully!).

