

Welcome to the second edition of our PTA Newsletter 2022!

We've had a great 6 months planning and holding some really fun events and we wanted to take this opportunity to share with you all how much we have raised and to say how grateful we are to you for your continued support.

# MONEY RAISED THIS YEAR!



EVENTS HELD	MONEY RAISED
MOTHERS DAY SHOP	£293.14
UNIFORM SALE	£185.00
EASTER EGG HUNT (INCLUDES MATCH FUNDING)	£1,152.58
FATHERS DAY SALE	£335.52
ICE CREAM SALE	£281.60
SUMMER CONCERT	£110.62
SUMMER JUBILEE FAYRE	£4,993.42
SPORTS DAY	£172.05

**GRAND TOTAL = £7,523.93**

## WHAT HAVE WE ACHIEVED FROM YOUR FUND RAISING SO FAR?

- NEW PLAYGROUND EQUIPMENT (READY FOR SEPTEMBER)
- BASKETBALL NETS
- BOOKS
- PLANTS/ EQUIPMENT TO REJUVINATE POND AREA
- WEATHERPROOF DISPLAY FRAMES
- ICE POLES FOR CHILDREN ON SPORTS DAY
- BOOKMARKS TO COMMEMORATE THE QUEENS PLATNUM JUBILEE



## OUR IDEAS FOR THE FUTURE . . .

- ALL WEATHER SPORTS PITCH
- OUTDOOR CLASSROOM

*thank  
you*

It would be impossible to thank everyone individually as we have been truly overwhelmed with the help and support that we have received over the last 6 months, but we would like to say a special thank you to the School and to the wonderful office team. As a new committee, they have helped steer us with events that we have organized so far and have always shown us a friendly face throughout the countless requests of 'can we have the PTA cupboard key please?!' So, thank you!

We would also like to say a HUGE thank you to our wonderful raffle doners who provided us with some amazing raffle prizes for our Summer Jubilee Fayre! The money we raised from the raffle was truly sensational so thank you!!

And last, but certainly not least, we would like to say a massive thank you to all of the parents and carers who have supported or volunteered at our events - we really cannot do it without your help (and patience) and we are incredibly grateful.

## AS A REMINDER - WHO ARE THE PTA?

We're **ALL** a part of the PTA! The PTA is made up of parents, carers and teachers led by the following core committee members:

Claire Mulcare - Co- Chair  
Gigi Backshall - Wilkinson - Co- Chair  
Nicky Cattell - Treasurer  
Nicola Ball - Secretary



L - R: Nicky, Claire, Gigi & Nicola



**Claire Mulcare, Co- Chair**  
*Children in: Year 5, Year 3 & Reception*



**Gigi Backshall - Wilkinson, Co- Chair**  
*Children in: Year 4 & Year 2*



**Nicky Cattell, Treasurer**  
*Child in: Year 3*



**Nicola Ball, Secretary**  
*Child in: Year 2*

### RECYCLING REMINDER

As mentioned previously, we are now linked with Lancing Recycling and TerraCycle which means we can collect some waste that would normally go into landfill (the bins back on to the Cherry Tree Playground). These items include crisp packets, biscuit wrappers, toothbrushes, toothpaste tubes and milk bottle lids.

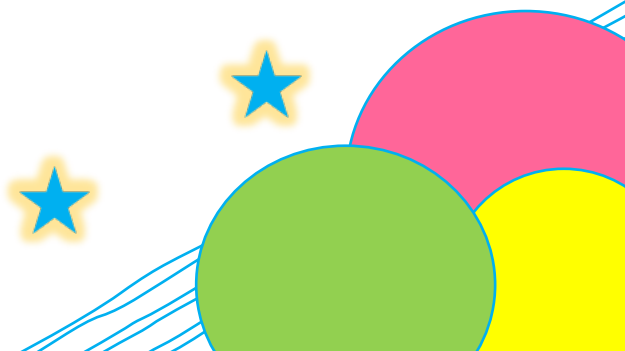
#### PLEASE NOTE THAT WE CAN NO LONGER RECEIVE PET FOOD PACKAGING

Please kindly contact Sarah Ringshaw or Gigi Backshall-Wilkinson, who are coordinating the recycling collection. If you have any questions, or if you can offer an hour or two on a Friday morning to help with the collection it would be very much appreciated. Please look on our Facebook page for details of what can be recycled.  
<https://www.facebook.com/groups/3483507418388867>

In summary, the PTA receive cold hard cash for the recycling that we collect as well as it being good for the planet! So far, the money that we have received has contributed towards picnic benches for the KS2 Playground, made from recycled plastic!

### CLOTHES RECYCLING

We also have a bin for good quality, useable clothes and fabric, that the PTA will also receive funds for. There is a list of recycling that we accept as well as what can go into the clothing bank on the 'St Nic's Recycling' Facebook page. Please place all of your clothes in clean carrier bags and place them into bin number 7 on the Cherry Tree Playground. - Please note that for safety reasons, the School have requested for parents to not use the big green clothing bin in the carpark. Astra Recycling will not take soiled rags or carpets however Cancer Research Charity shops do take soiled rags/ damaged clothes which need to be labelled and bagged separately - it helps us to support another worthwhile charity too!



Already love Amazon? How about using Amazon Smile? It's so easy to set up. Every time you shop, Amazon will automatically donate 0.05% of the profits to us!



**amazonsmile**  
You shop. Amazon gives.

How to sign Up . . .

1. Visit [www.smile.amazon.co.uk](http://www.smile.amazon.co.uk) and sign into your Amazon account
2. Using the search bar, select our charity 'St Nicolas and St Mary CE Primary School PTA' using the orange 'select' button
3. That's it! You are ready to start shopping using the same Amazon you love!

### Simple ways that YOU can help the PTA...

1. **Volunteer!** If every parent/carer helped at just one event every two years, we could run all our usual events and many more.
2. Use **Easyfundraising** to help raise money when you shop online! Visit the website <https://www.easyfundraising.org.uk/causes/stnics/>
3. Set up a **Direct Debit** to the PTA - just £1 per month, per family or per child, or whatever you feel able to give. Please also complete a Gift Aid form if you are eligible, so that we can claim on your contributions - the form is attached to this newsletter, and they are also available from the office.
4. Buy your children's name tags & stickers from **MyNameTags.com**, quoting the school ID 59580, or [www.stikins.co.uk](http://www.stikins.co.uk) quoting School number 35375 - raise money with every order!

### Where does the money actually go?

Here are some of the things that we have spent your funds on in the last few years: -

- General playground resources for both playgrounds - skipping ropes, hoops, ping pong balls etc.
- Paid towards some of the new computers in school
- New Rubber matting around the new outdoor gym
- Climbing Wall
- The Kiln

Most of these are items that the School simply could not have had without our help, and which benefit all of our children.

*AND FINALLY . . . We have thoroughly enjoyed the challenge that the first 6 months have given us and we're sure you'll agree how wonderful it's been to be able to hold events again and start fund raising for facilities that benefit our lovely children. As always, we love to hear your ideas!*

*We hope you all have a wonderful summer and look forward to seeing you in September! Claire, Gigi, Nicky & Nicola*

### Keep in touch...

The easiest way to keep in touch with the PTA is through the Facebook page, School ping, our monthly newsletter and by joining us at our 'Coffee & Cake' Mornings'. Join the closed group at "St Nicolas & St Mary Primary School PTA" (Most year groups have their own pages too) or you can email us too at [PTAChair@stnm.org.uk](mailto:PTAChair@stnm.org.uk) , [PTASecretary@stnm.org.uk](mailto:PTASecretary@stnm.org.uk) or [PTATreasurer@stnm.org.uk](mailto:PTATreasurer@stnm.org.uk)

